

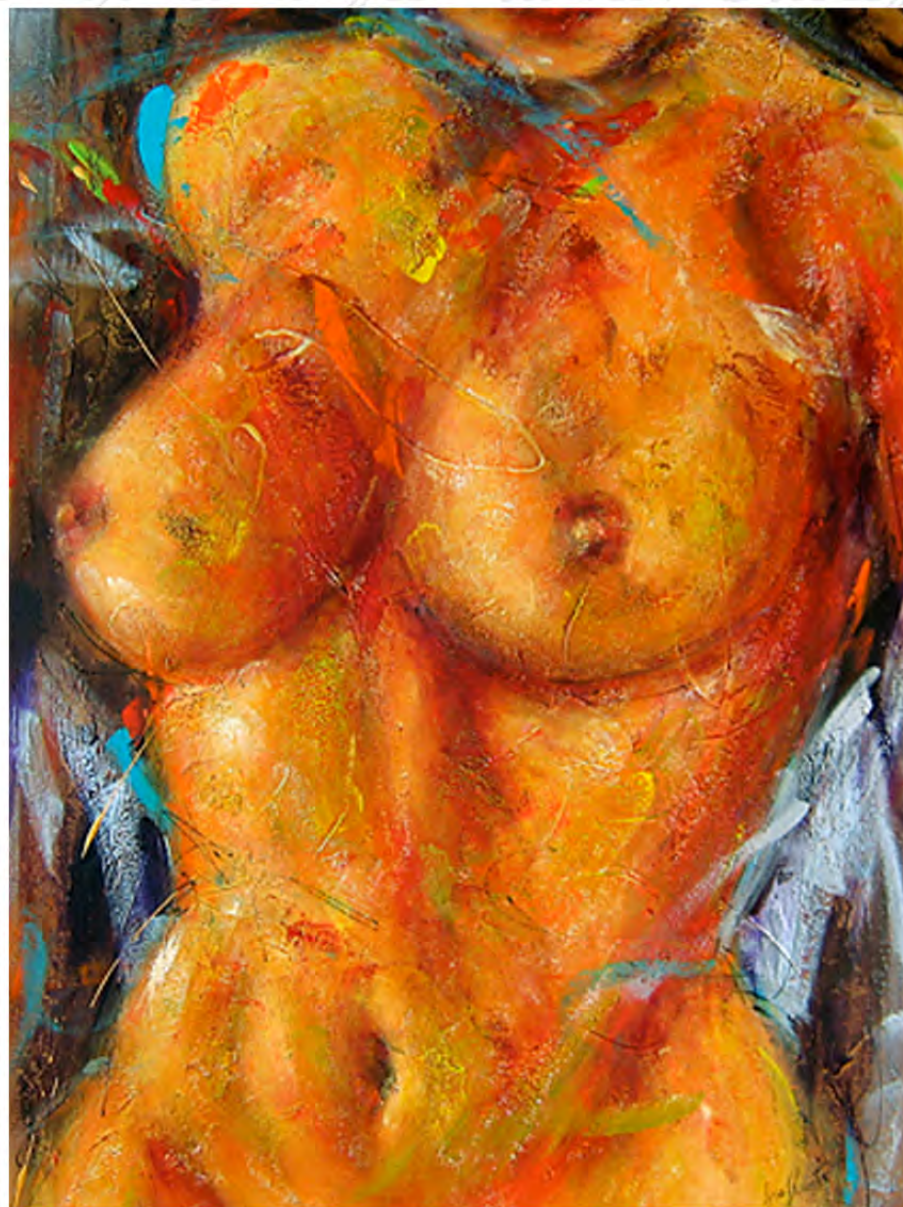
# Lyse Paquette

## A passionate life

JACQUES BÉLANGER

It is sometimes due to a tragic event that an artist will venture onto new roads. When her partner died of cancer, Lyse Paquette went through a difficult period of grieving and decided to opt for a life affirming attitude.

Belle dans son corps, acrylic, 101,6 x 76,2 cm



Justine, acrylic, 91,44 x 61 cm

"When he passed away, I was astonished to realize that I could no longer paint a still life, a style that had made my reputation. My friends suggested I try another subject, this is how the human face came into my painted world."

Let us flashback a few years. Young Lyse loves to draw and dreams of studying at the École des beaux-arts. "My father was worried about my future and suggested I try graphic design, a trade that carried less uncertainty. So I worked in this field for nearly thirty years."

In the mean time, she is taking drawing lessons at the Saidye Bronfman Center and, in 2002 makes the transition from the advertising world into full-time creation. "I had been painting for a long time but at the beginning of the 1990's I switched from oil paints to acrylics. The change allowed me to have a greater freedom of expression and to include more movement in my paintings. The medium dries much faster; it is an advantage I appreciate."

### FROM STILL LIFE TO BURNING FACES

Ever since her arrival in galleries, her style has been a hit with collectors. "Balance is crucial for

me. I suppose it is an old graphic designer habit. I also like to play with the lighting contrast. At that time, my favourite themes were fruits and flowers. I enjoyed interpreting the emotion they evoked in me. Since 2008, the year of my partner's death, I only paint human faces and bodies."

The human faces represented by Paquette are textured and surrounded by pure colors. In *Feline*, the character has a face color dominated by red and oranges, suggesting a burning inferno. The lips, fire truck red, contribute in the overwhelming heat of the face and exacerbate an already pronounced sensuality. All this burning is tempered by emerald green eyes, a welcomed freshness in this fiery maelstrom. The calming

effect also comes from the blue tones circling the figure's head. In short, a very sensual portrait of a tormented character. "I am especially careful about my character's expressions. The eyes must convey real emotion."

However, Lyse Paquette omits facial details when she paints nudes. "I do it out of prudery, so my model can retain some intimacy. Nudity is already so revealing. It is strange that, in my partner's last months of living I painted a series entitled *Viva la Vida!* which was literally screaming my love of life. While he was wilting away. How bizarre..."

Bizarre it may be. But this ode to life is terribly beautiful. ●



Down Tempo, acrylic, 101,6 x 76,2 cm



She's always a Woman, acrylic, 91,44 x 61 cm

Lyse Paquette  
Permanently  
at the Beauchamp  
Gallery  
69 rue Saint-Pierre  
Québec, QC  
418 694-2274  
galeriebeauchamp.com

16, rue Saint-Jean-  
Baptiste  
Baie-Saint-Paul  
418 240-2244

Naturellement homme  
acrylic, 101,6 x 76,2 cm